

Flat 73 Appleby Lodge Wilmslow Road, Fallowfield, Manchester, M14 6HG

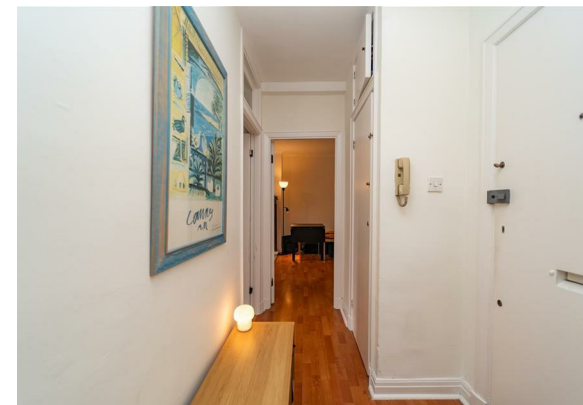


JP & Brimelow
ESTATE AGENTS

Offers In The Region Of £155,000

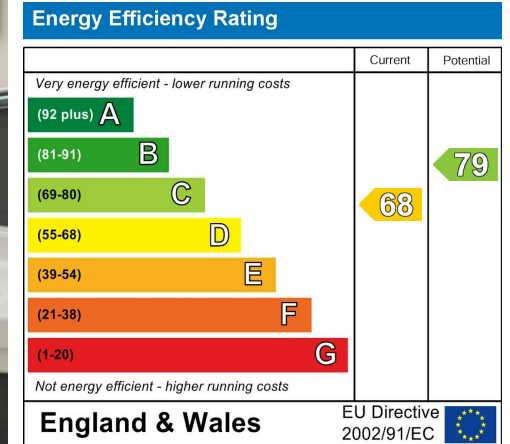
 1  1  1  D

VIDEO TOUR AVAILABLE Presenting a unique opportunity to own this highly sought after, grade II listed, ONE DOUBLE BEDROOMED apartment. This 1930's Art Deco apartment also provides impressively well maintained communal gardens. In brief, this well-planned accommodation consists of a welcoming entrance hall, a spacious lounge, a fitted kitchen, a double bedroom, a three-piece bathroom and ample storage, as well as resident only off road parking. Offering excellent access to Manchester City Centre, Universities, Manchester Airport and the surrounding areas of Didsbury and Withington through the biggest bus network in Europe, along the Wilmslow road corridor. Internal viewing essential to appreciate this fantastic apartment. OFFERED WITH NO VENDOR CHAIN.



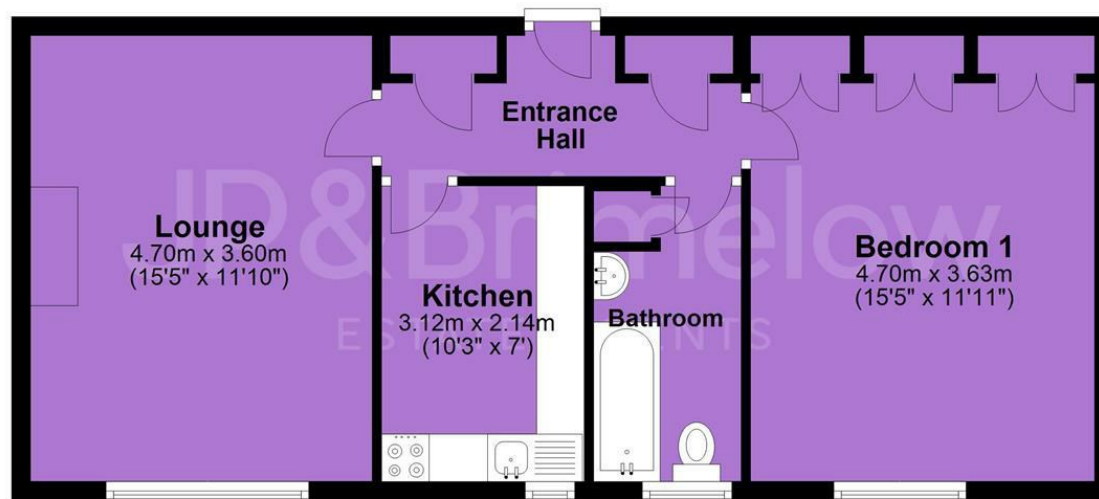


EPC Chart

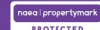


Tenure: **Leasehold** Council Tax Band: **A**

Ground Floor



JP & Brimelow Estate Agents Ltd
430 Barlow Moor Road, Manchester, M21 8AD
Tel: 0161 8822233
E: sales@jpbrimelow.co.uk www.jpandbrimelow.co.uk



JP & Brimelow
ESTATE AGENTS

NOTICE: JP & Brimelow Estate Agents Ltd for themselves and for the vendors or lessors of this property whose agents they are give notice that:

- (i) the particulars are set out as a general outline only for the guidance of intending purchasers or lessees, and do not constitute, nor constitute part of, an offer or contract;
- (ii) all descriptions, dimensions, references to the condition and necessary permissions for use and occupation, and other details are given in good faith and are believed to be correct but any intending purchasers or tenants should not rely on them as statements or representations of fact but must satisfy themselves by inspection or otherwise as to the correctness of each of them;
- (iii) no person in the employment of JP & Brimelow Estate Agents Ltd has any authority to make or give any representation or warranty whatever in relation to this property.

[jpandbrimelowstateagents](https://www.instagram.com/jpandbrimelowstateagents)

[@jpandbrimelow](https://twitter.com/jpandbrimelow)